



## The endothelium is the body's healing switchboard

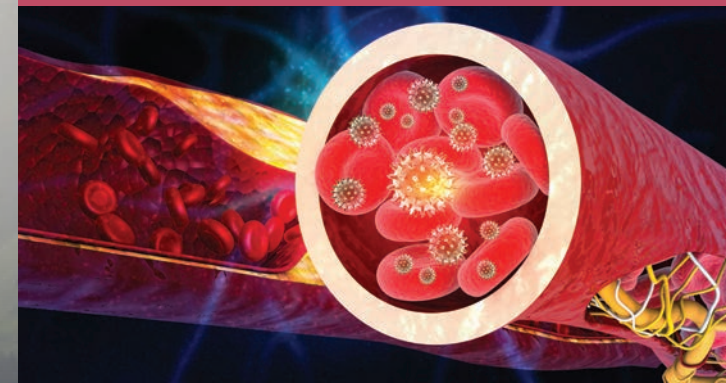
The endothelium is the 'lining' inside of your blood vessels. When it's healthy, it keeps blood flowing smoothly. When it's damaged, the vessels become sticky and inflamed, making it easier for blockages and clots to form — that's the beginning of vascular endothelial disease.

The endothelium works to prevent clots, regulate blood pressure, support the immune system, drive healing and new vessel growth, and even act as a hormone-producing organ.

### When the endothelium is inflamed, patients may experience:

- **Dyslipidemia** - 105.3 million adults in the U.S. have lipid abnormalities<sup>1</sup>
- **Hypertension** - 47% of U.S. adults are estimated to have hypertension<sup>2</sup>
- **Diabetes** - In the U.S., 38.4 million people are diabetic and 97.6 million adults have prediabetes<sup>3</sup>
- Fatigue, insomnia, and mood disorders

## How does SmartVascular Dx differ from other tests?



- 1 Detects damage to the arteries and endothelium that is often undetected.
- 2 Analyzes the stage of the disease and identifies risk factors that contribute to its progression.
- 3 Uses multiple biomarkers coupled with a proprietary algorithm for a comprehensive assessment of arterial conditions.

### Measuring

## Vascular Endothelial Inflammation with SmartVascular Dx™

SmartVascular Dx serves as a “**check engine light**” by providing accurate diagnoses of significant vascular inflammation linked to various medical conditions including diabetes, hypertension, and dyslipidemia. These conditions increase the risk of serious inflammatory issues.

## Getting tested is simple

**Speak with your Doctor** to ask if SmartVascular Dx is right for you.

**A quick** blood draw is all that is needed.

**Get results** with an easy to understand report that can be used to guide your next steps.

**Protect** your health based on your unique risk factors.

**MorningStar**  
Laboratories™

A CLIA-Certified & CAP-Accredited Laboratory



## Why choose SmartVascular Dx ?

SmartVascular Dx is a simple yet powerful blood test that measures 7 key biomarkers of vascular inflammation—critical indicators of hidden vascular risk.<sup>4</sup>



- IL-16
- sFas
- Fas Ligand
- HGF
- CTACK
- Eotaxin
- MCP-3

Many commonly used tests for detecting inflammation cannot distinguish between acute and chronic forms. Understanding the difference between these two distinct types of inflammation is essential. In contrast, SVDx takes a broader approach by assessing inflammation within the endothelial lining of the vascular system—an underlying factor associated with serious health conditions linked to elevated lipids, high blood pressure, and excess blood sugar.

By tracking your vascular health over time, you and your physician can detect early warning signs and act before serious problems arise.

Each report includes a personalized progress chart, allowing you to monitor improvements and make informed decisions about your vascular health.



## Understand your inflammation levels to better monitor your health



SmartVascular Dx is a powerful, data-driven test that measures inflammation vs. repair balance, equipping your physician with the insights needed to develop a highly personalized treatment plan. Take proactive steps toward optimal vascular health, don't wait for symptoms of dyslipidemia, hypertension, or diabetes to appear—prioritize your preventative care today.

### References:

1. Toth PP, Potter D, & Ming EE. (2012) Prevalence of lipid abnormalities in the United States: the National Health and Nutrition Examination Survey 2003-2006. *Journal of clinical lipidology*, 6(4), 325-330. <https://doi.org/10.1016/j.jacl.2012.05.002>
2. Martin et al. (2024) Heart disease and stroke statistics: a report of U.S. and global data from the American Heart Association. *Circulation*, Published online January 24, 2024. doi: 10.1161/CIR.0000000000001209
3. National Diabetes Statistics Report. [https://stacks.cdc.gov/view/cdc/148231/cdc\\_148231\\_DS1](https://stacks.cdc.gov/view/cdc/148231/cdc_148231_DS1)
4. SVDx Test. *Cardiovascular Disease Risk Tests - Medical Clinical Policy Bulletins* | Aetna

### Know Your Vascular Health

## Empowering Wellness

To discover more about SmartVascular Dx, consult your physician or visit [mslinc.com](http://mslinc.com) to learn more.



### Contact us:

[info@mslinc.com](mailto:info@mslinc.com)  
+1 866.299.8998

5151 California Ave, Ste 150  
Irvine, CA 92617

MorningStar  
Laboratories<sup>®</sup>

A CLIA-Certified & CAP-Accredited Laboratory

Copyright © 2025 MorningStar Laboratories, LLC. All rights reserved. MorningStar Laboratories and SmartVascular Dx are trademarks owned by MorningStar Laboratories in the US and/or other countries. All other trademarks, logos, and brand names are the property of their respective owners and are for identification purposes only.