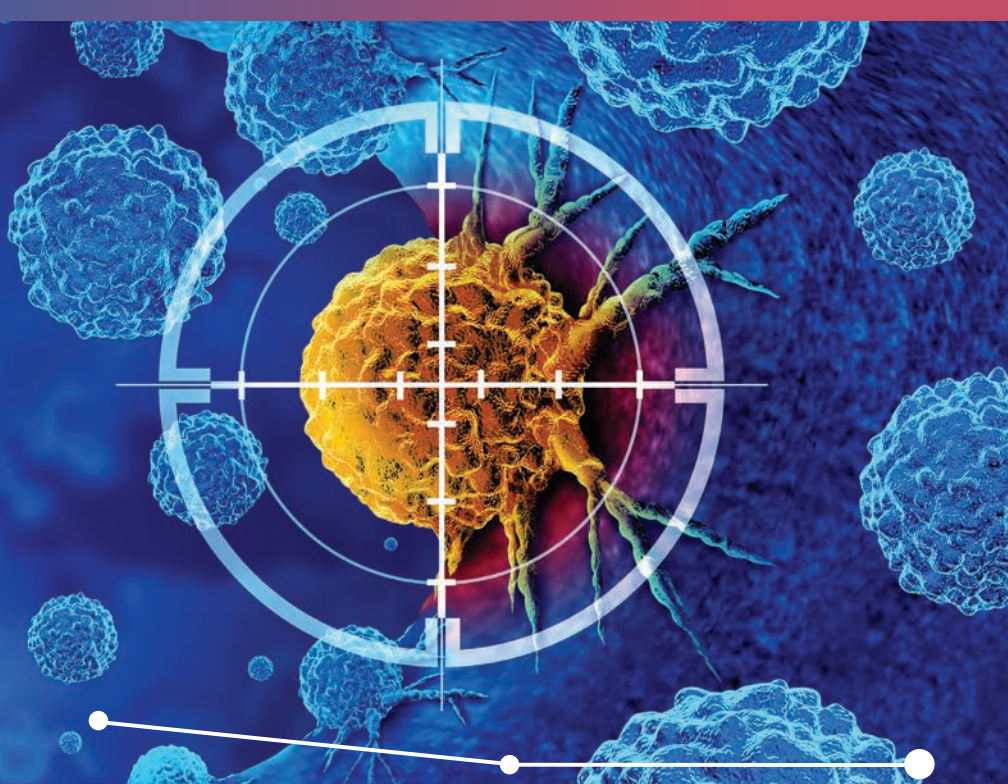


Chronic inflammation is a persistent, often silent condition<sup>1</sup> that is not routinely screened for.

A low-grade inflammation that remains for months or years within the body can be quite damaging. While not visible, it can open the door to tissue and organ damage, a weakened immune system, and increased risk of chronic diseases such as dyslipidemia, hypertension, and diabetes.<sup>2</sup>



**SmartVascular Dx™**

Identifying and managing the causes of chronic inflammation is essential for maintaining healthy bodily function. Although inflammation is a natural protective response to injury or infection, prolonged inflammation can become harmful.

Inflammation caused by abnormal lipid levels, blood sugar content, and blood pressure will activate white blood cells and cytokines—chemical messengers—involved in the inflammatory response that respond to an injury or infection within the body.<sup>1</sup>

## Chronic inflammation can impact your vascular/endothelial health

The endothelium is the inner cellular lining of the vascular system, which includes blood vessels and the lymphatic system.<sup>3</sup> This system transports blood, nutrients, oxygen, and hormones while also removing metabolic waste.

Chronic conditions such as dyslipidemia, hypertension, and diabetes, can contribute to ongoing vascular inflammation and endothelial dysfunction.<sup>4</sup> Over time, this inflammatory stress may damage blood vessels, impair circulation, and increase the risk of vascular-related complications.

**SmartVascular Dx™ (SVDx)** is designed to help physicians and healthcare providers assess biomarkers associated with vascular inflammation and endothelial health when evaluating patients with dyslipidemia, hypertension, and diabetes. SVDx provides additional insights that can help inform a comprehensive treatment plan, which may include targeted medical interventions, nutritional guidance, exercise recommendations, weight management strategies, stress reduction, and other personalized wellness measures.

Visit our website to learn more: [msllinc.com](https://www.msllinc.com)

**MorningStar  
Laboratories™**

MorningStar Laboratories 5151 California Ave, Ste 150 | Irvine, CA 92617  
[www.msllinc.com](https://www.msllinc.com) | 866.299.8998

Copyright © 2026 MorningStar Laboratories, LLC. All rights reserved. MorningStar Laboratories and SmartVascular Dx are trademarks owned by MorningStar Laboratories in the US and/or other countries. All other trademarks, logos and brand names are the property of their respective owners and are for identification purposes only.

#### References:

1. Furman D, Campisi J, Verdin E, et al. (2019) Chronic inflammation in the etiology of disease across the life span. *Nature medicine*, 25(12), 1822–1832. <https://doi.org/10.1038/s41591-019-0675-0>.
2. Yasuf S, Hawken S, Ounpuu S, et al. (2004) Effect of potentially modifiable risk factors associated with myocardial infarction in 52 countries (the INTERHEART study): case-control study. *Lancet* (London, England), 364(9438), 937-952. <https://pubmed.ncbi.nlm.nih.gov/15364185/>
3. Félétou M. (2011) *The Endothelium: Part 1: Multiple Functions of the Endothelial Cells-Focus on Endothelium-Derived Vasoactive Mediators*. Morgan & Claypool Life Sciences. <https://www.ncbi.nlm.nih.gov/books/NBK57149/>
4. Gallo G, Volpe M, & Savoia C. (2022) Endothelial Dysfunction in Hypertension: Current Concepts and Clinical Implications. *Frontiers in medicine*, 8, 798958. <https://doi.org/10.3389/fmed.2021.798958>